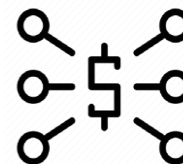
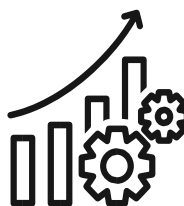




**STRIA**  
L I T H I U M

TSX-V: SRA | OTCQB: SRCAF | FRANKFURT: S35A.F

Exploring Québec for spodumene-rich pegmatite lithium deposits to supply the next generation of lithium-ion batteries



### WORLD CLASS REGION

Two projects located in Canada's James Bay district – one of world's hottest lithium regions. Adjacent to world class lithium projects.

### FULLY FUNDED

Stria carried interest in Pontax Central project to feasibility stage.  
Joint venture partner fully funded to execute on exploration strategy. Stria has 4 million in cash and equivalents.

### EARLY SUCCESS

JORC Maiden Resource released by Cygnus Metals with plenty of upside.  
Drilling has already outlined Spodumene over 1.2 Km strike. Geological work commenced on Pontax II to follow up on high grade tantalum anomalies.

### SHARE STRUCTURE

Tight share structure of 28M issued and outstanding 39M fully diluted.  
Low burn rate.

### LEGISLATED DEMAND

Government imposed EV mandates by 2030 half of all USA vehicles/ 2035 all vehicles in Canada (phased approach).

### UNPRECEDENTED GOVERNMENT SUPPORT

US. Inflation Reduction Act (US. Invests \$500B in clean energy. Grants and funding to North American critical minerals mining industry.  
Canadian critical minerals strategy of grants and loans to critical mineral mining companies.  
Subsidies for using Canadian critical minerals in EV battery production.  
Financial incentives to attract battery and automotive manufacturers.

### GEOGRAPHICAL ADVANTAGE

Close to major paved highway, electricity, and accommodations. Quebec Government and Cree Nation \$4.7 B infrastructure development (road, rail, power, and ports).

### TRUSTED LEADERSHIP

Experienced leadership, including Chairman Jeffrey York, former COO of Giant Tiger stores and former CEO of Farm Boy grocery chain.

*“... there is a real threat that U.S. companies will not be able to benefit from domestic and global market growth... Our supply chains for the transportation, utility, and aviation sectors will be vulnerable and beholden to others for key technologies.”*

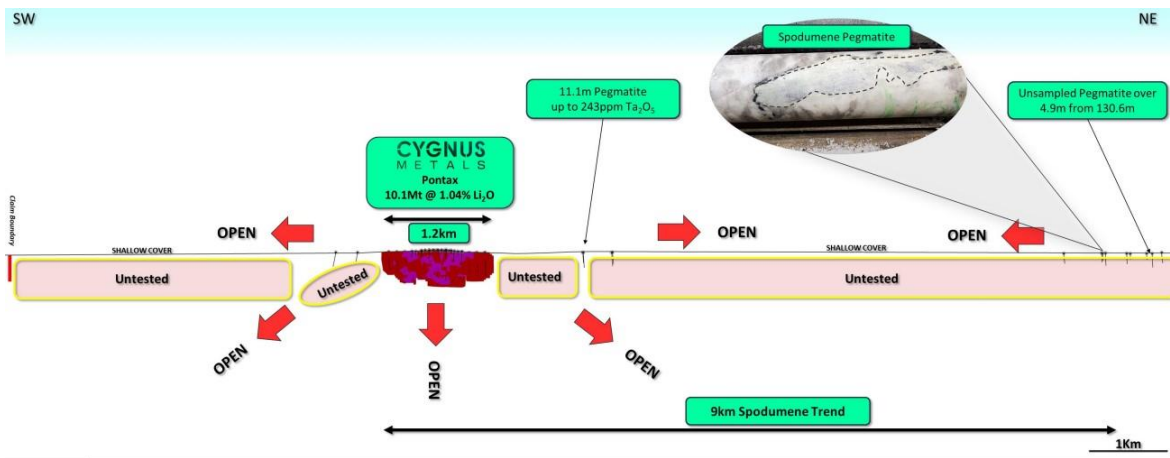
## Pontax Central

- Cygnus released JORC Maiden Resource Estimate August 14, 2023.

Resource Category	Cut-off Grade (Li <sub>2</sub> O)	Tonnes (Mt)	Grade (Li <sub>2</sub> O)	Contained Li <sub>2</sub> O (Tonnes)	Grade (Ta <sub>2</sub> O <sub>5</sub> ppm)
Inferred	0.5%	10.1	1.04%	105,280	74.79

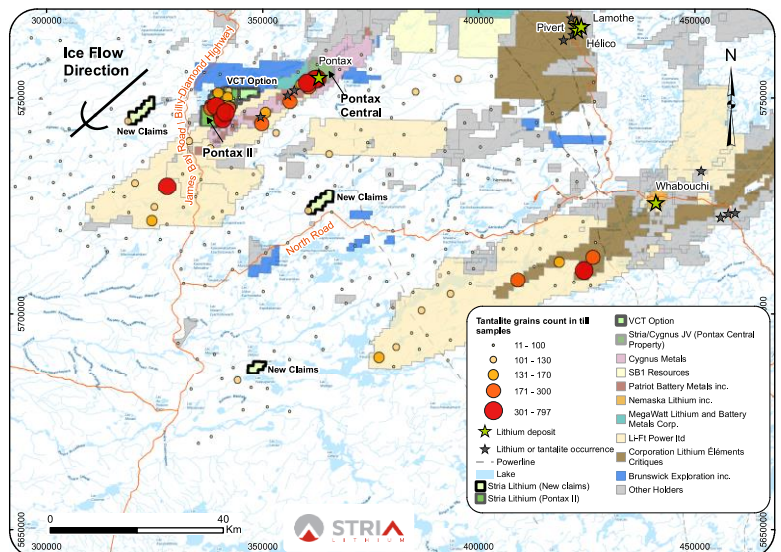
Cygnus press release <https://bit.ly/3POb5Rf>

- High-grade mineralization from surface
- 1.2km of existing strike and OPEN in all directions
- Significant scope for expansion through step out drilling on going (Fall 2023)



## Pontax II

- 128 individual claims totalling 6811 hectares (68 square kilometres) on strike with Pontax Central along prospective Chambois Greenstone Belt hosting spodumene bearing pegmatites
- Located in active prospective zone also hosting Patriot Battery Metals, Brunswick Exploration, and Li-Ft Power Ltd.
- Exploration to date resulted in assays of highly anomalous tantalum oxide grain counts in till samples. Pontax II grain counts stand at the 97.6 centile of the regional population with an average of 156 grains per sample, with the highest count at 800 grains, the highest count ever recorded by the laboratory. As a comparative basis, a regional survey in the same area conducted by the Ministère de l'Énergie et des Ressources Naturelles du Québec, processed using the same technology, yielded an average count of 36 grains per sample.



**“The lack of a substantial lithium battery supply chain in the United States and the lack of secure access to energy materials pose serious threats to U.S. national and economic security.”**

*Li-Bridge, public-private alliance*



**Biden funding North American minerals**



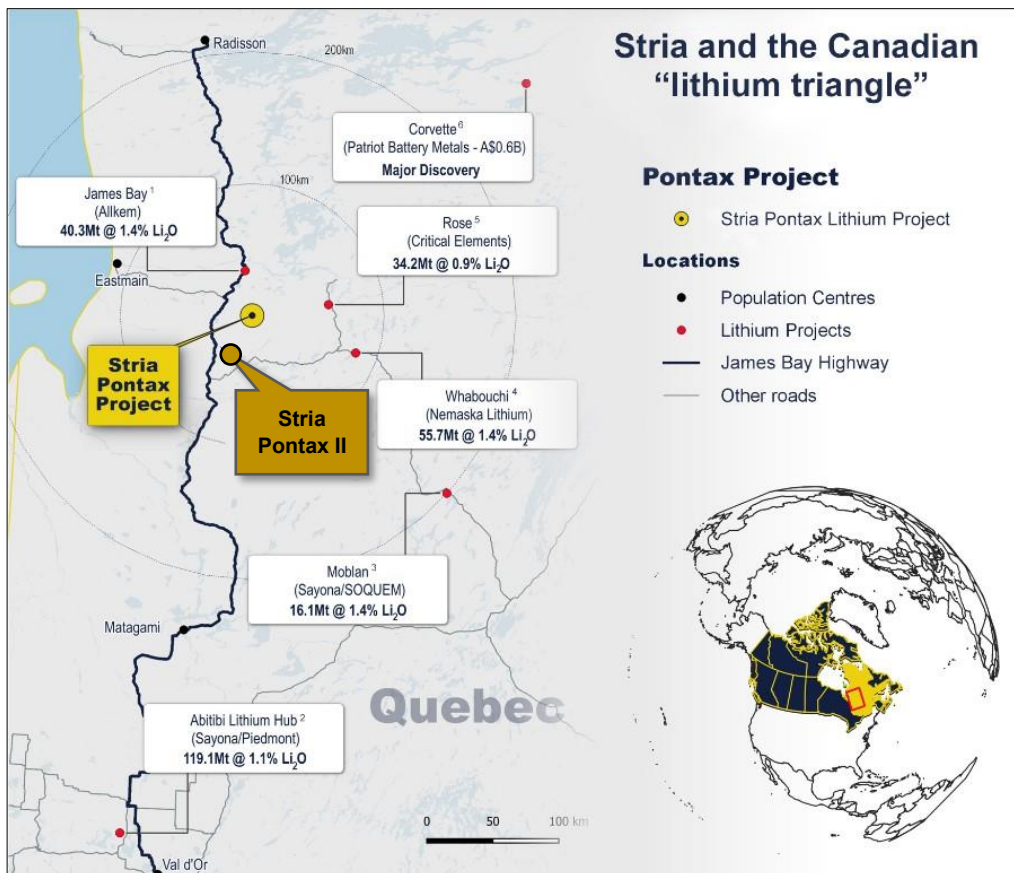
**Canada announces intention to create the Canada Growth Fund (CGF) capitalized with \$15B**



**Canada invests \$1.5B and partners to build battery plant in Ontario**



**Volkswagen to Build EV Battery Plant in Ontario**



For more information or to contact CEO  
 E. d.hanisch@strialithium.com  
 T. +1(613)612-6060



**Dean Hanisch  
 CEO**